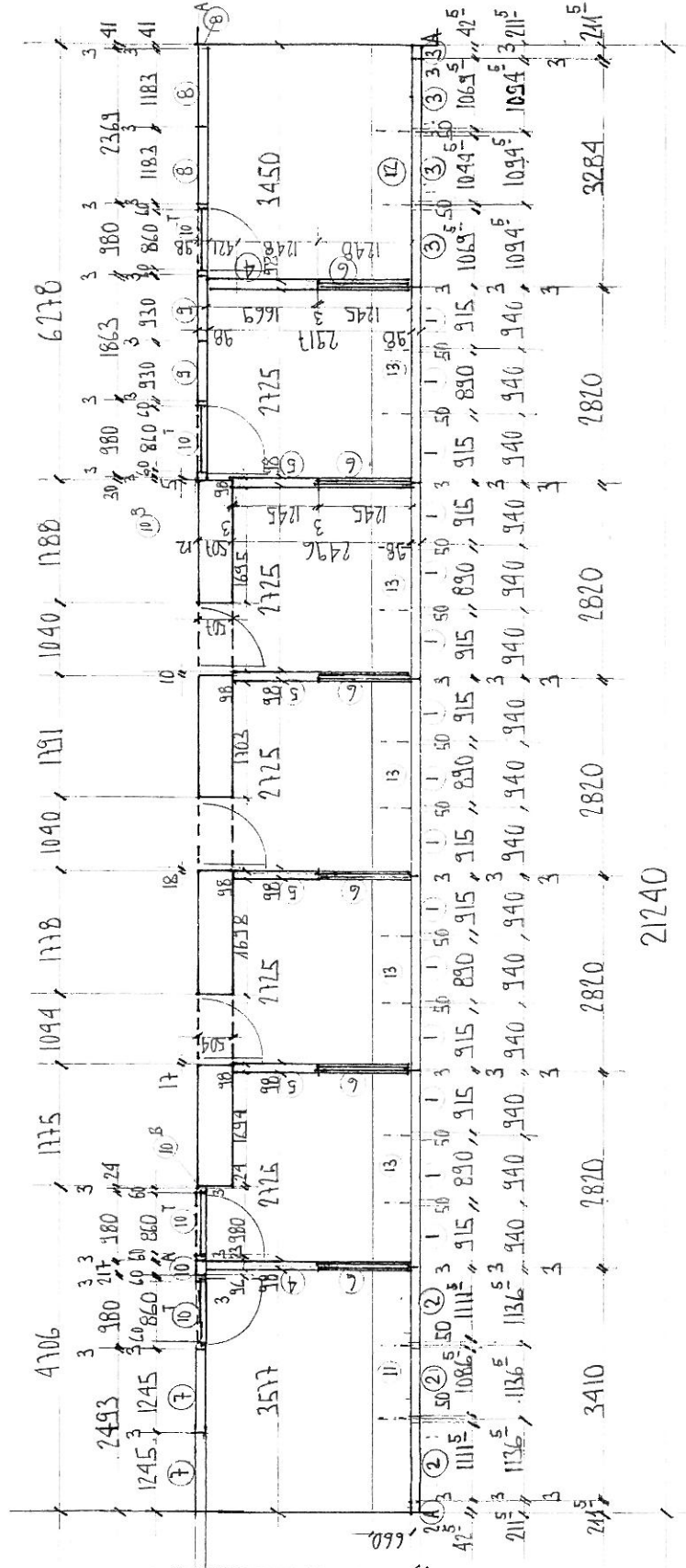
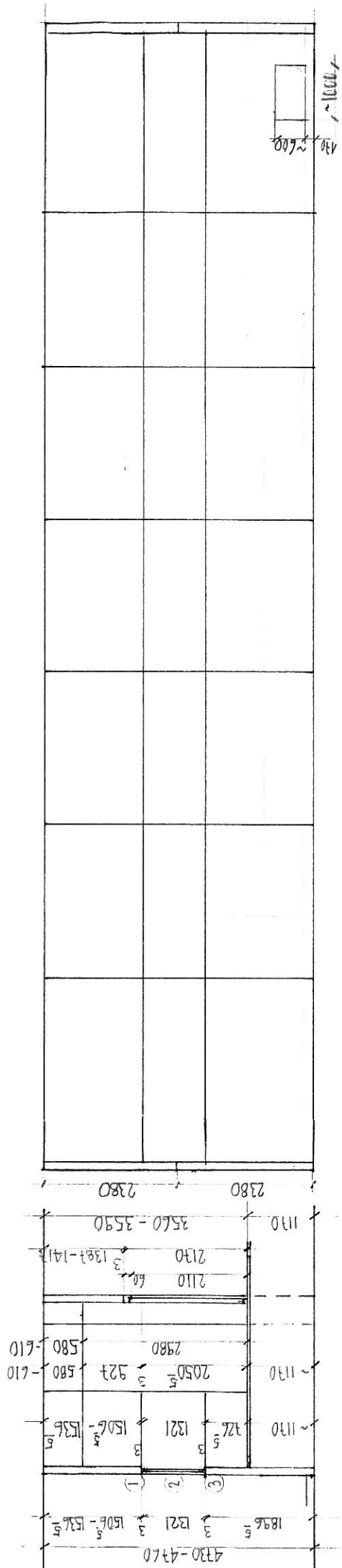


Questions and Answers – Mandatory site visit I & II

Question	Answer	Date received
Can we hang curtains and light support to the ceiling of the studio?	<p>Curtains or roller blinds could be attached to the false ceiling supports close to the windows.</p> <p>Lights - depending on weight could be hung from the false ceiling through the support framework, or if necessary from the concrete ceiling.</p> <p>As per the technical plans behind the false ceiling is ducting for the ventilation/air conditioning systems, so attention would have to be paid to location. All installations would have to be coordinated with WHO building management and UNAIDS external contractors.</p>	4 th August
What is up there, above the ceiling in the studio?	Please refer to attached technical plans of the interpretation cabins. Behind the false ceilings is ducting for the ventilation/air-conditioning system.	
Can we also install, instead of the proposed position for the 19" rack in the storage room, in the basement where the other servers are?	<p>Reference from the requirement and cabling needs, ideal room for the equipment is either U01 Room (wiring closet) or the Telecoms Room.</p> <p>Although it is limited, U01 Room terminates Data/Voice cables going to the studio and edit room, while the Telecoms Room option holds any Fiber/Copper cables from the outside plant.</p>	
Is there a passage for cables from the server room towards the studio and edit room? If not can it be made?	There is no available cable passage from the server room directly to the studio and edit room. Data/Voice Cables to the studio and edit room run from U01 Room (wiring closet).	
Extra small air-con in the studio is preferable.	<p>According to WHO building management, there is no possibility to increase the current air-conditioning capacity.</p> <p>Any increase in air-conditioning requirements would require a new independent system.</p>	
Extra power in the edit and studio is preferable.	<p>The 6 interpretation cabins and the control room have 2 x 13 amp circuits.</p> <p>If this is insufficient, the bidder would have to include in the cost of cable installation and circuit breakers on the existing electric board.</p>	
Can there be a cable way between the studio and edit, and a cable way towards the fiber?	Yes, through U01 Room (wiring closet), depending on the cabling requirements, an extra cost might be required for any other additional pathways/cables.	
We need detailed plans of the rooms, electrical wiring.	Please refer to attachments from page 3 and onward.	
Is there a delayed date foreseen for the final draw? As it was mentioned at our visit.	<p>Following requests from the bidders, the deadline for proposal submissions has been extended to 19th September 2011, 17h00 Geneva time.</p> <p>Following the extension of the proposal submission deadline, the RFP has been revised, therefore, interested bidder(s) who have not yet registered for the mandatory site visit may register to attend the third site visit. Please see the revised RFP.</p>	
How many cameras would you require for the studio?	<p>As included in the RFP, the studio should be equipped with only one camera.</p> <p>In the equipment section of the proposal the variety of different camera options is included because UNAIDS is interested to know the prices of different options.</p> <p>UNAIDS will ultimately want to compare prices with ease of use. (As mentioned in the RFP all the equipment will, in general, be used by lightly trained staff.)</p>	28 th July
Would you require a live Chroma key?	<p>The Chroma key can be done in post-production. The bidder does not have to provide a live Chroma key solution at this time, but in the future UNAIDS might consider the option of upgrading to a live Chroma key solution and so the bidder should keep this in mind.</p> <p>Hence the bidders are requested to provide quotation for the "post production solution" and advise on the cost for the live upgrade.</p>	

Could you provide us with a more detailed “floor plan” of the venue?	Please refer to the attached document.	
END of Questions	END of Answers	N/A
Attachments		
Plans d’execution – 1	Please see page 3 and onward.	
Plans d’execution – 2	Please see page 3 and onward.	
Technical plan – ventilation	Please see page 3 and onward.	
Floor plan – Ground floor	Please see page 3 and onward.	
Electricity capacity	The 6 interpretation cabins and the control room have 2 x 13 amp circuits. If this is insufficient, the bidder would have to include in their offer the installation of cabling, circuit breaker on the electric board.	
END of Attachments		



REQU 10
0 3 AOUT 2006

Par...
(Handwritten signature)



Telefon 031 990 30, Fax 031 990 30 20
 Untermattweg 13, CH-3027 Birm, www.schwabag.ch

10002

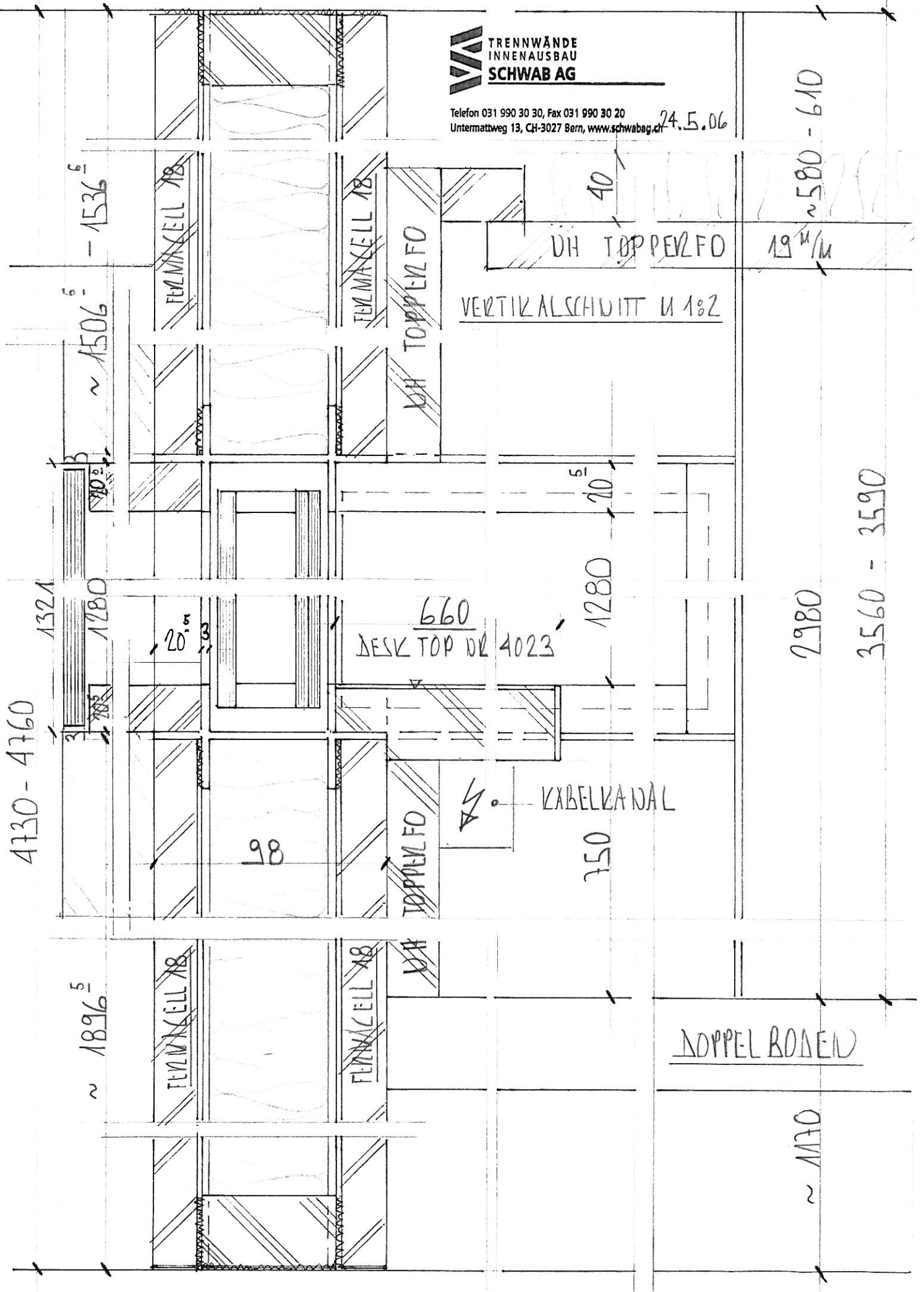
11. 5. 2006
 29. 4. 2006

21240



Telefon 031 990 30 30, Fax 031 990 30 20
Untermattweg 13, CH-3027 Bern, www.schwabag.ch

24.5.06



4730 - 4760

1321
1280

~ 1536⁵

~ 1506⁵

20⁵

98

660
DESK TOP NR 4023

750

KABELKANAL

20⁵

1280

UH TOPPELFO

UH TOPPELFO

VERTIKALSCHNITT U 1:2

40

19^u/m

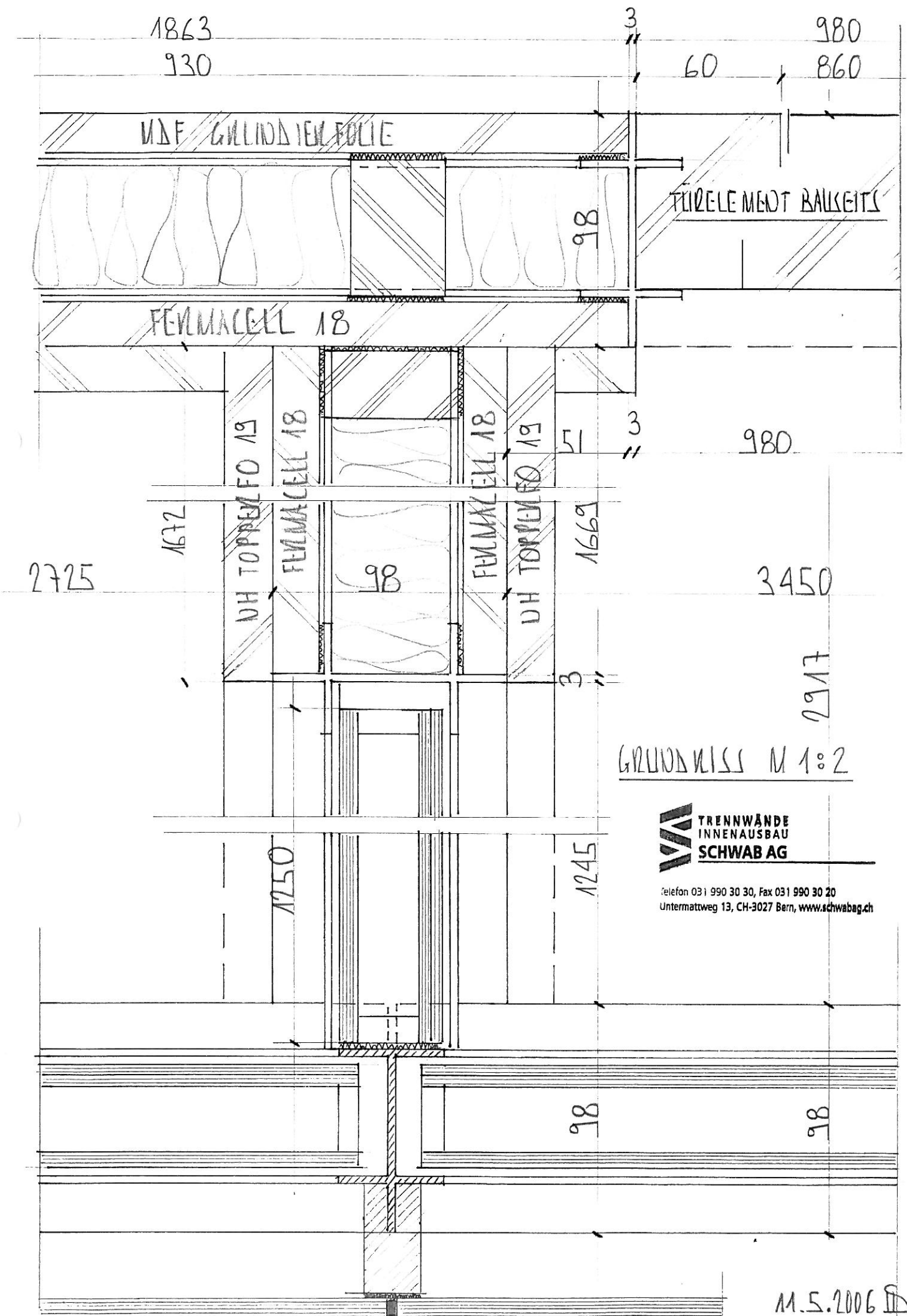
2980

3560 - 3590

~ 580 - 610

DOPPELBODEN

~ 1130



GRUNDRISS M 1:2



Telefon 031 990 30 30, Fax 031 990 30 20
 Untermattweg 13, CH-3027 Bern, www.schwabag.ch

M.5.2006

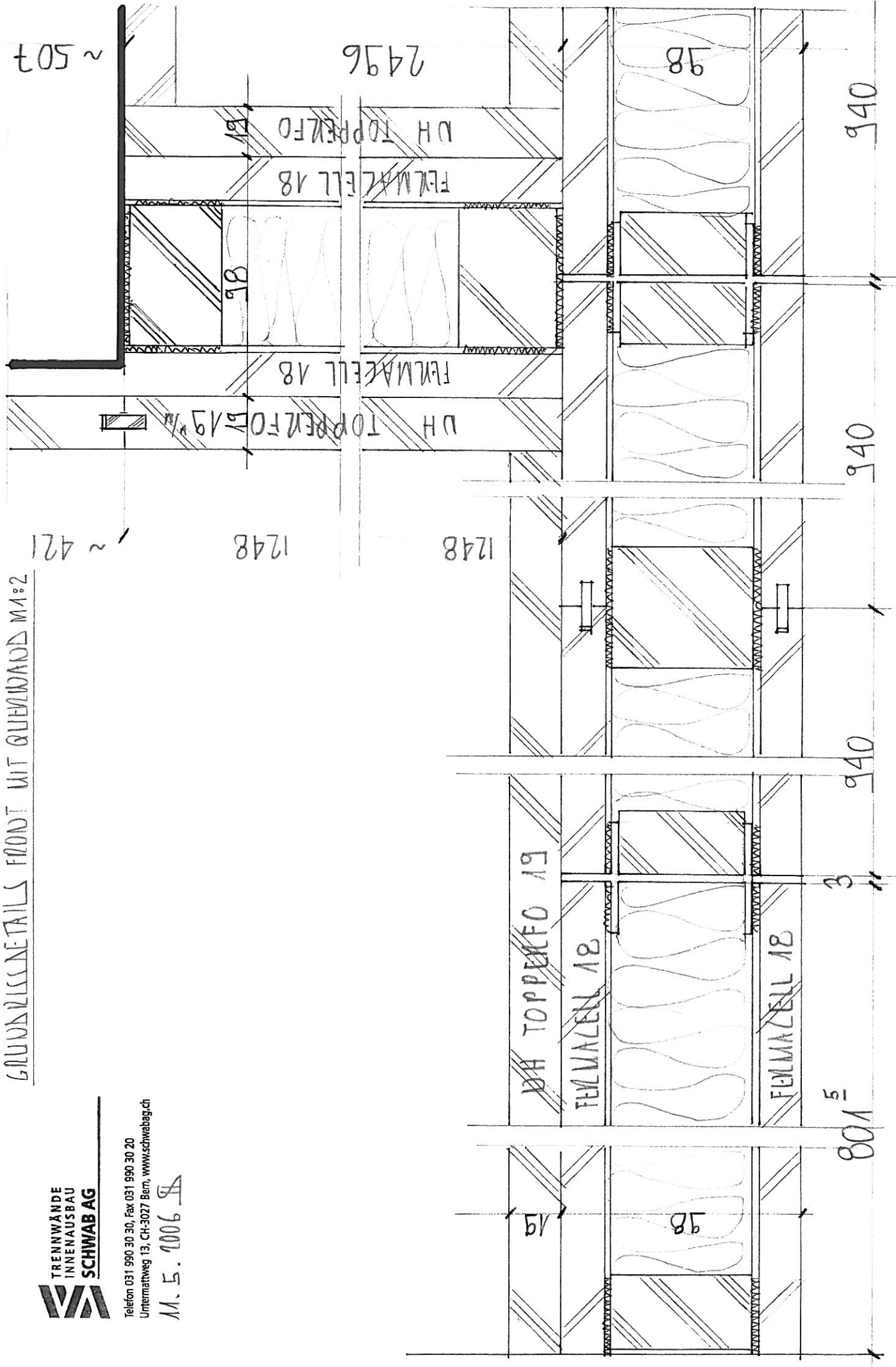
GRUNDRISSDETAILS FRONT MIT QUELLENADEN M1:2



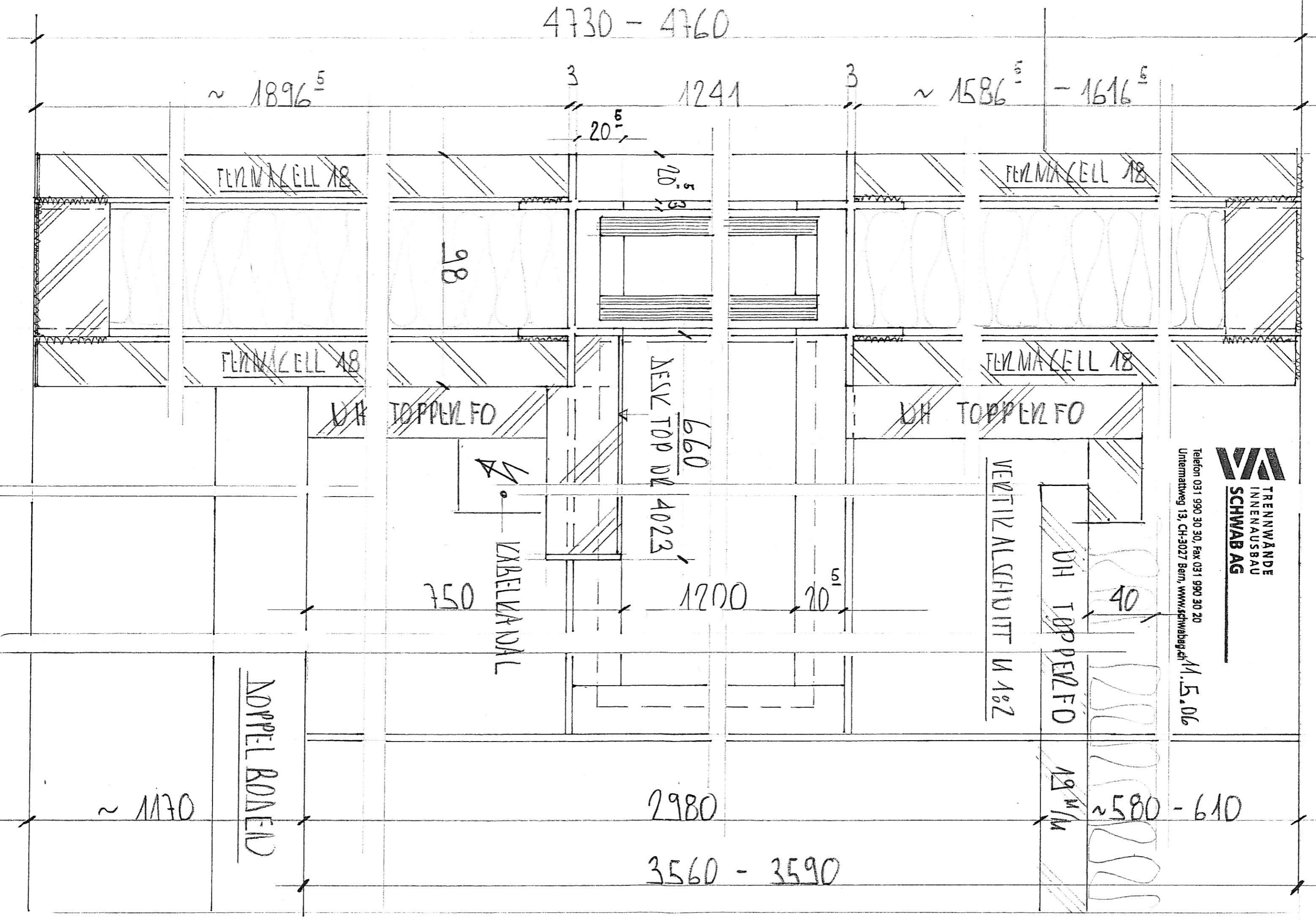
Trennwände
INNENAUSBAU
SCHWAB AG


Telefon 031 990 30 30, Fax 031 990 30 20
Untermattweg 13, CH-3027 Bern, www.schwabag.ch

M. 5. 1006



4730 - 4760



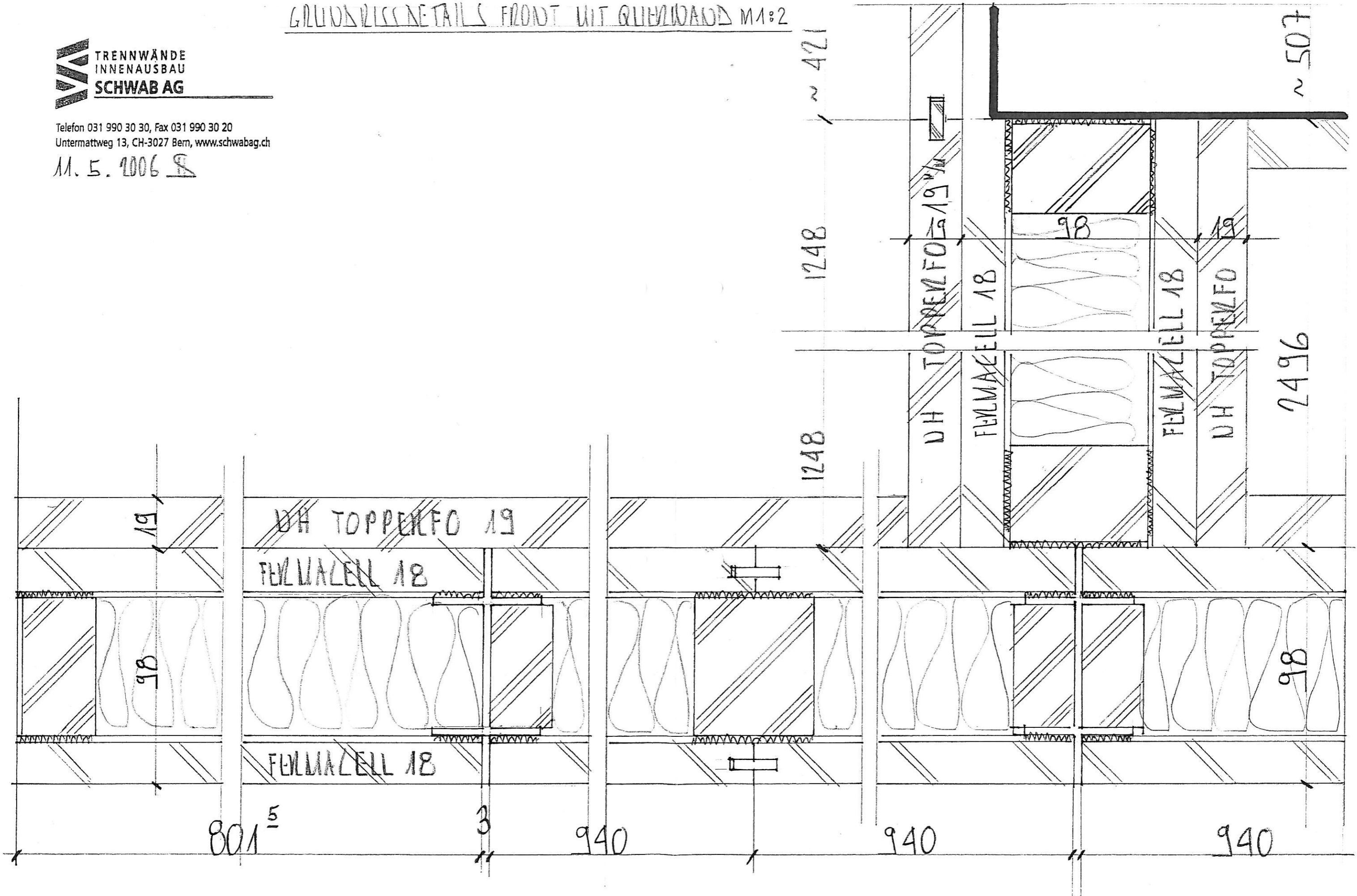

TRENNWÄNDE
 INNENAUSBAU
SCHWAB AG
 Telefon 031 990 30 30, Fax 031 990 30 20
 Untermattweg 13, CH-3027 Bern, www.schwabag.ch 11.5.06

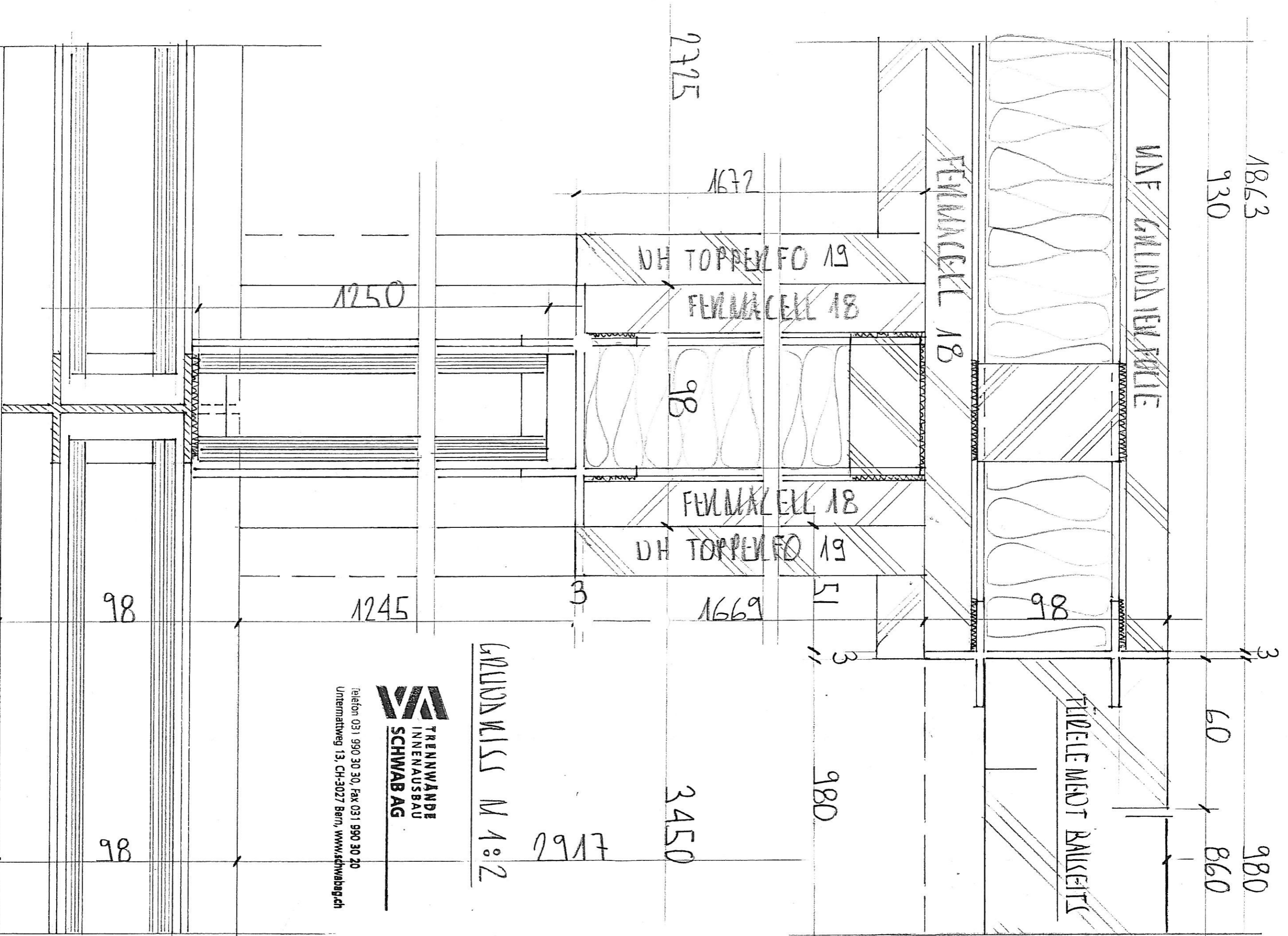
GRUNDRISSDETAILS FRONT MIT QUERWAEND M 1:2



Telefon 031 990 30 30, Fax 031 990 30 20
Untermattweg 13, CH-3027 Bern, www.schwabag.ch

11. 5. 2006

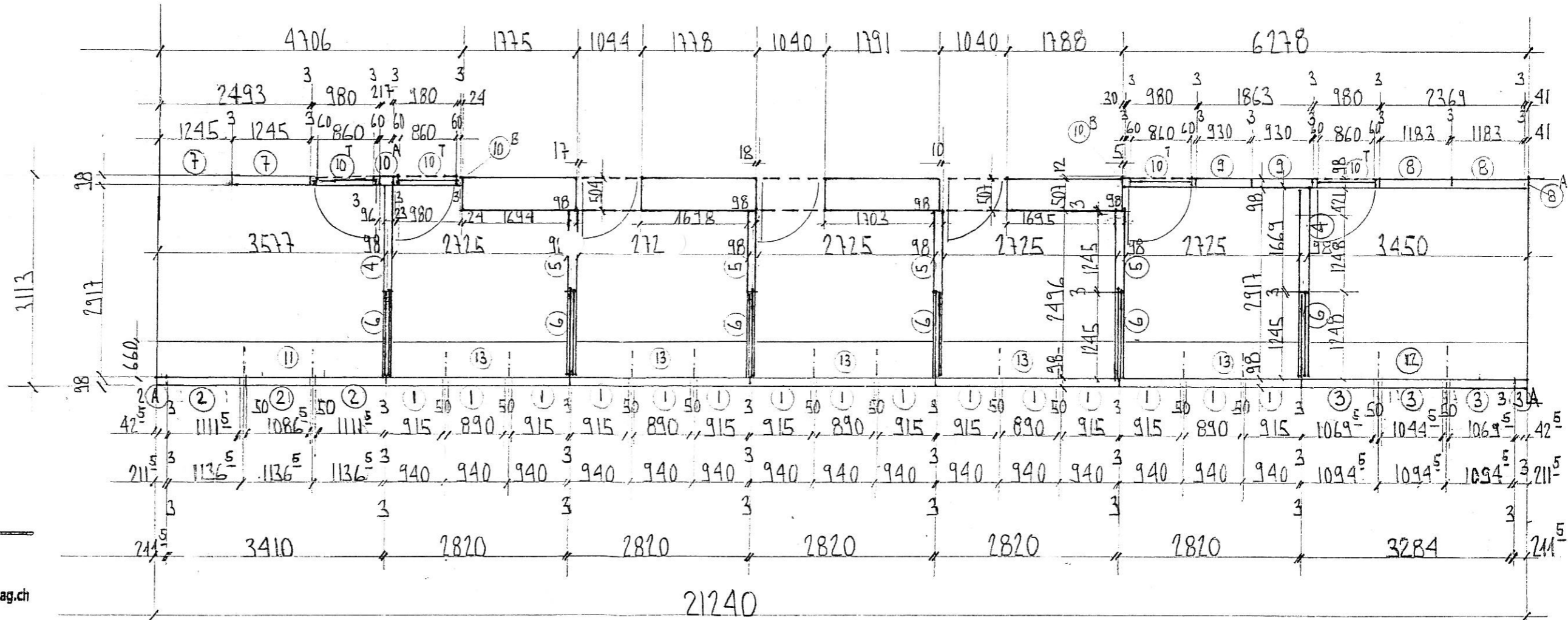
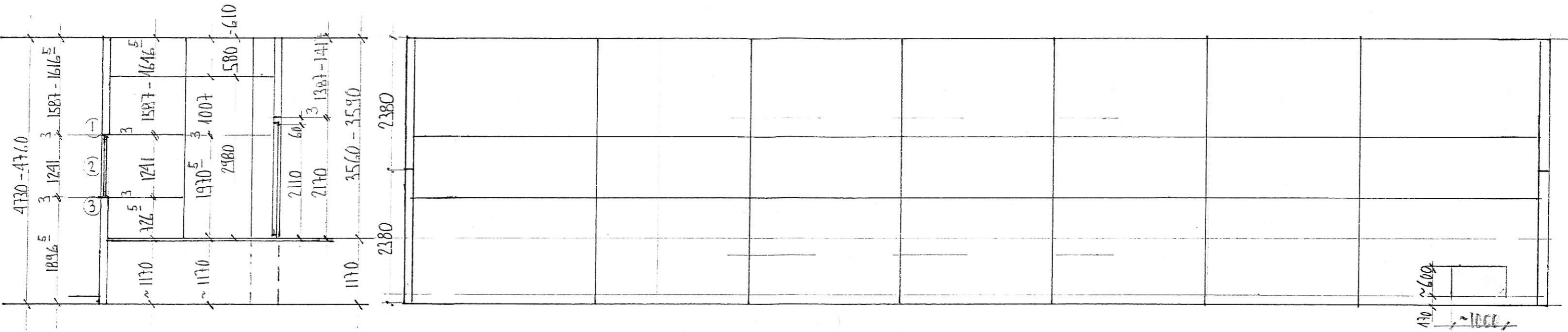




Trennwände
INNENAUSBAU
SCHWAB AG
Telefon 031 990 30 30, Fax 031 990 30 20
Untermattweg 13, CH-3027 Bern, www.schwabag.ch

GALLONWÄNDE M 1:2

M.5.2006 BD



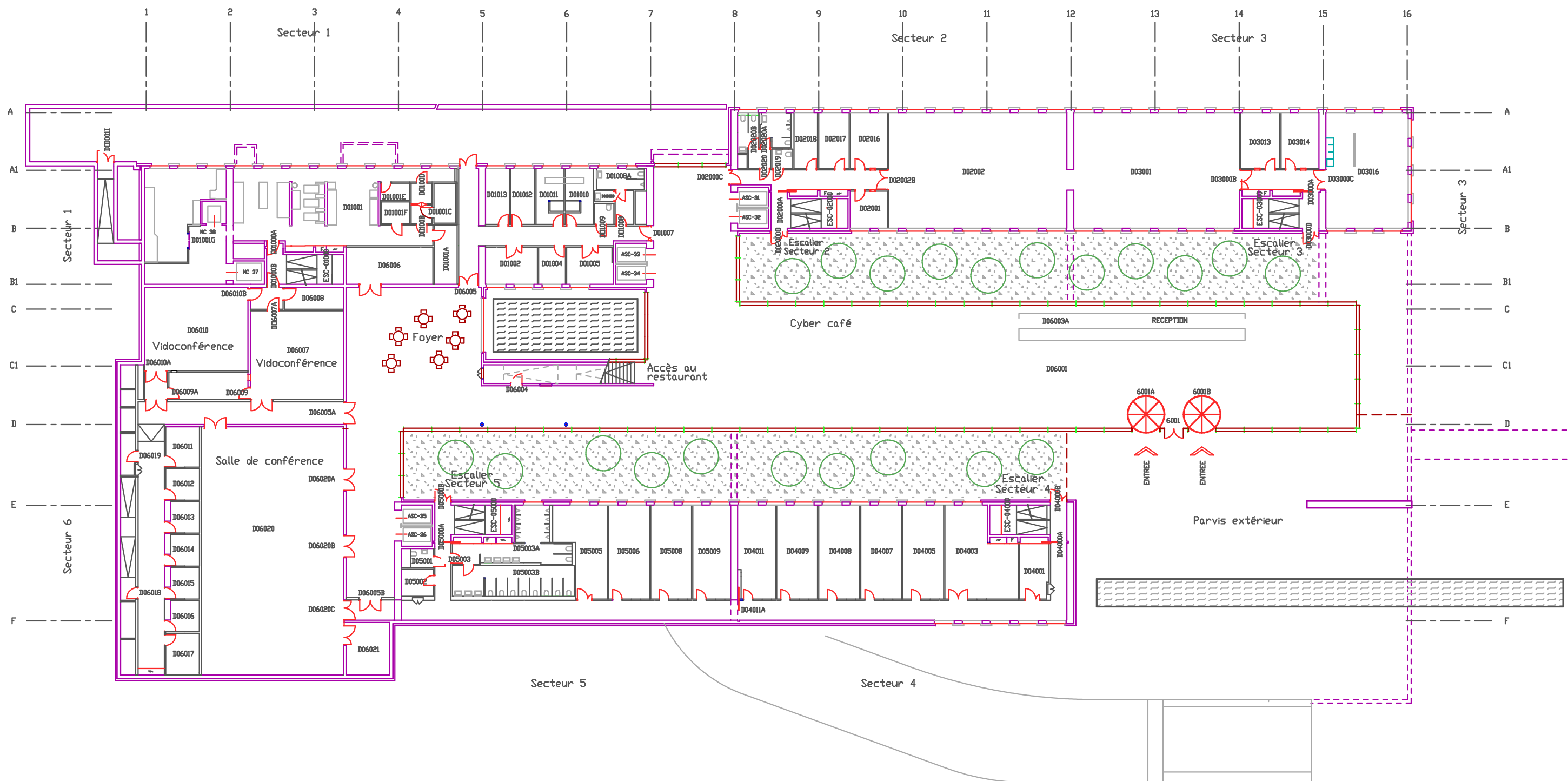
TRENNWÄNDE
INNENAUSBAU
SCHWAB AG

Telefon 031 990 30 30, Fax 031 990 30 20
Untermattweg 13, CH-3027 Bern, www.schwabag.ch

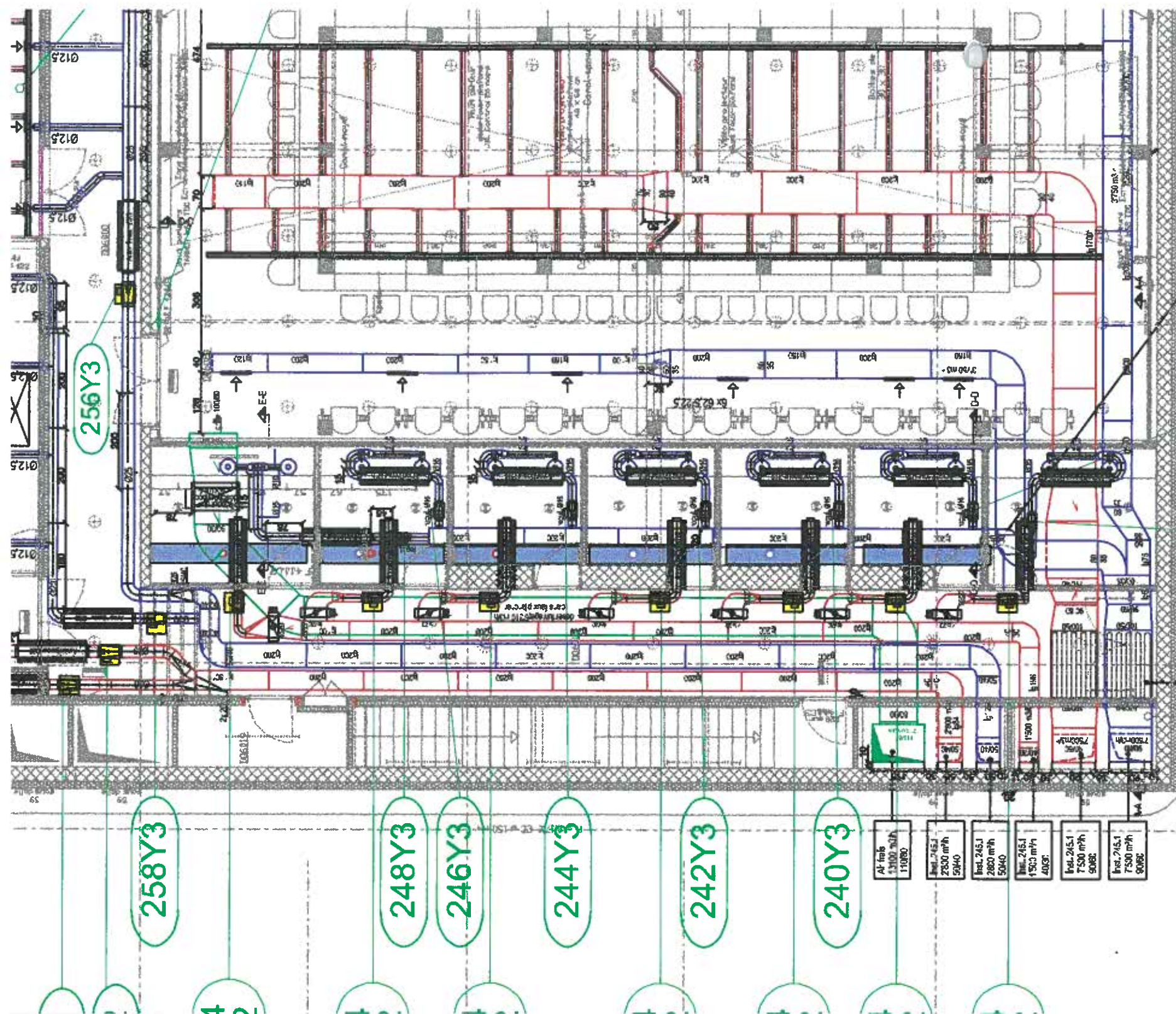
KONVE

11. 5. 2006

29. 4. 2006



REZ-DE-CHAUSSEE



256Y3

258Y3

248Y3

246Y3

244Y3

242Y3

240Y3

Ar. frais	13100 m ³ /h	11080
Inst. 245.1	2800 m ³ /h	5040
Inst. 245.1	2800 m ³ /h	5040
Inst. 245.1	1500 m ³ /h	4030
Inst. 245.1	7500 m ³ /h	9060
Inst. 245.1	7500 m ³ /h	9060

238Y3

236Y3

chambre de contrôle
ø 80 cm
FE = +0.3450

